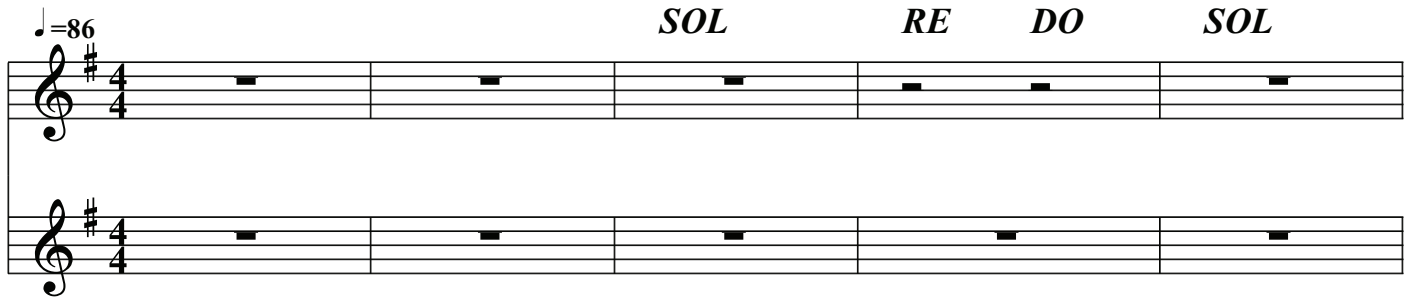



# VOI SIETE DI DIO

C. Casucci - M. Balduzzi

*SOL RE DO SOL*



*RE DO SOL RE SOL/DO SOL*



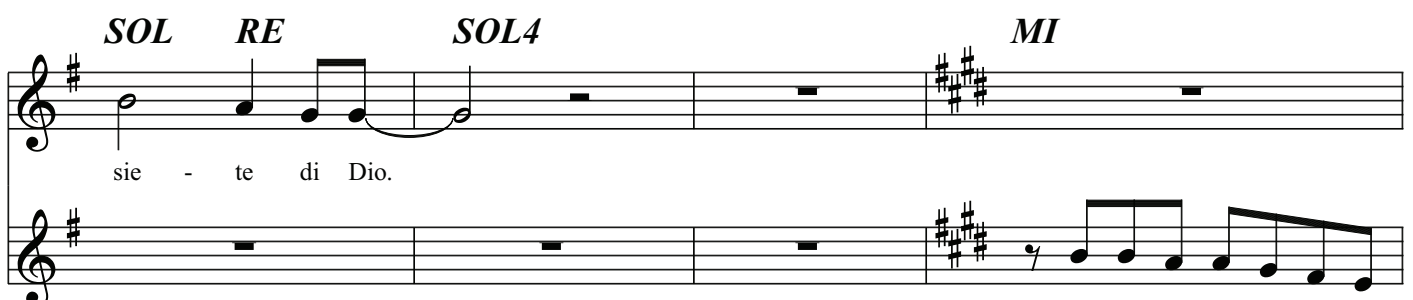
Tut - te le stel - le del - la not - te, le ne - bu - lo - se le co -

*RE MI- SOL RE SOL DO*



- me - te, il so - le su u - na ra - gna - te - la, è tut - to vo - stro e voi

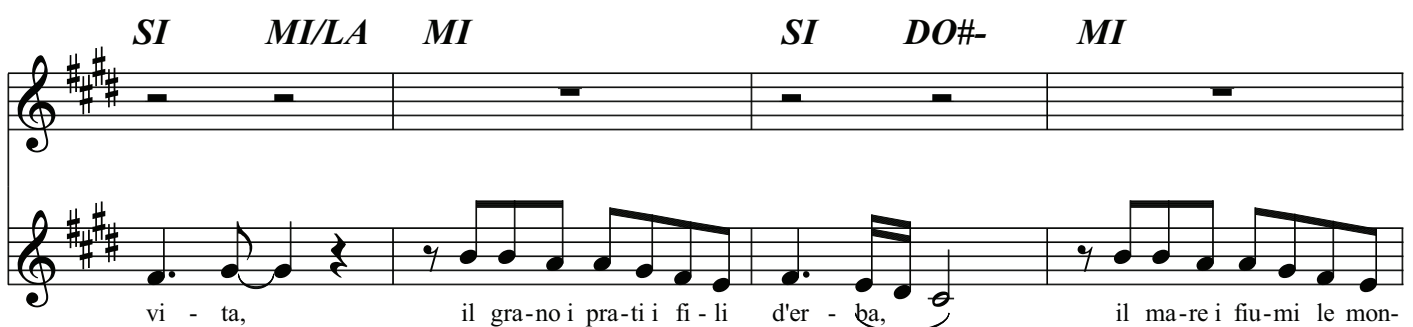
*SOL RE SOL4 MI*



sie - te di Dio.

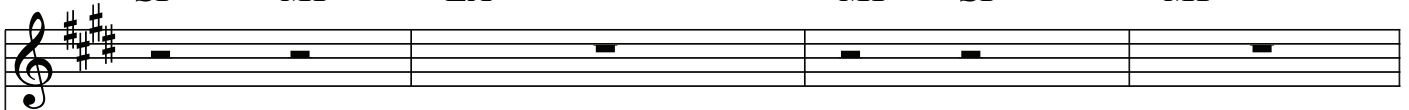
Tut - te le ro - se del - la

*SI MI/LA MI SI DO#- MI*

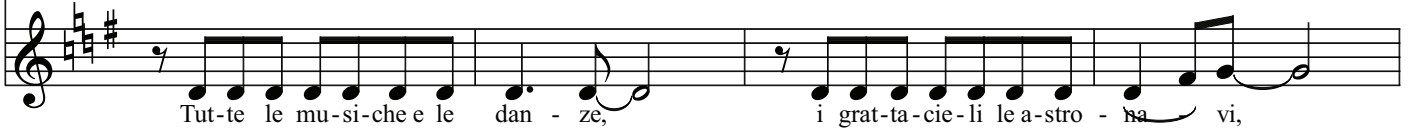


vi - ta, il gra - no i pra - ti i fi - li d'er - ba, il ma - re i fiu - mi le mon -

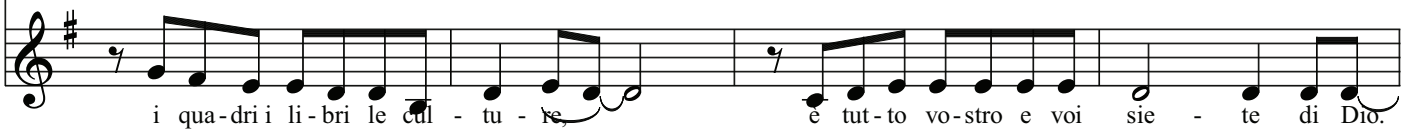
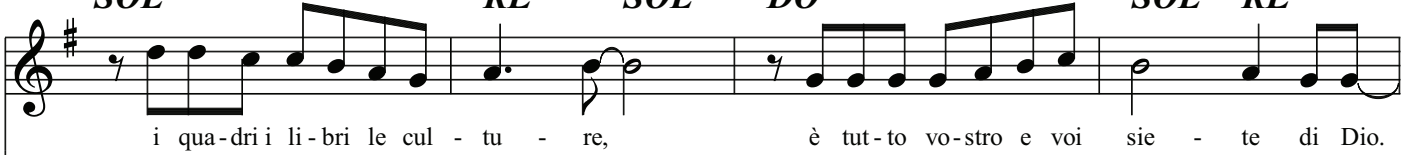
*SI MI LA MI SI MI*



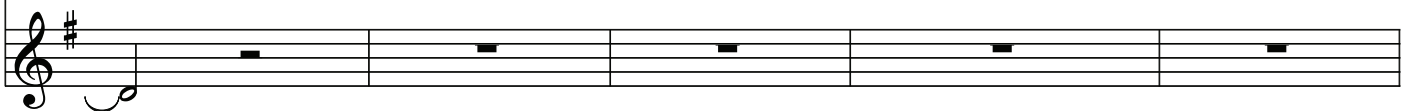
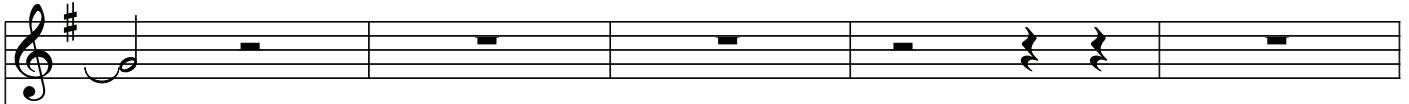
*SOL RE SOL/DO SOL RE MI-*



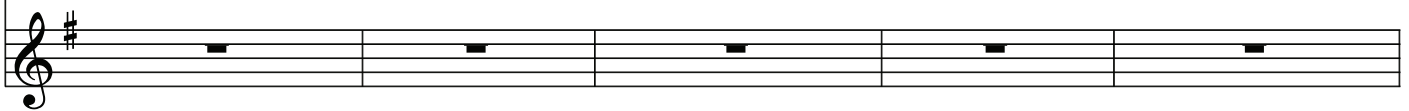
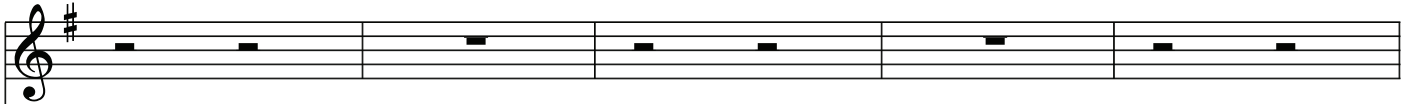
*SOL RE SOL DO SOL RE*



*SOL4 SOL RE SOL/DO SOL*



*RE MI- SOL RE SOL DO SOL RE*



*SOL4 MI SI MI/LA*



*MI* *SI* *DO#-* *MI* *SI* *MI*

quan-do sor-ri-do e quan-do pian - go, quan-do mi ac-cor-go-di chi so - no,

quan-do sor-ri-do e quan-do pian - go, quan-do mi ac-cor-go-di chi so - no,

*LA* *MI* *SI* *MI* *MI*

è tut-to vo-stro e voi sie - te di Dio. Tut-te le vol-te che per-

è tut-to vo-stro e voi sie - te di Dio. Tut-te le vol-te che per-

*SI* *MI/LA* *MI* *SI* *DO#-* *MI*

- do - no, quan-do sor-ri-do e quan-do pian - go, quan-do mi ac-cor-go-di chi

- do - no, quan-do sor-ri-do e quan-do pian - go, quan-do mi ac-cor-go-di chi

*SI* *MI* *LA* *DO#-* *SI* *LA*

so - no, è tut-to vo-stro e voi sie - te di Dio,

so - no, è tut-to vo-stro e voi sie - te di Dio,

*MI* *SI* *LA* *MI* *LA*

è tut-to vo-stro e noi sia - mo di Dio.

è tut-to vo-stro e noi sia - mo di Dio.

*MI*